

Contact Us

If you would like to obtain more information about Shinestage products and customized solutions, please contact our sales representative or visit www.shinetruss.com.



Shinestage

☎ 020-34882437/34882457

📍 No.7 Jiuhe Road, East Line, Kengtou Village, Nancun Town, Panyu District, Guangzhou City

🌐 www.shinetruss.com.



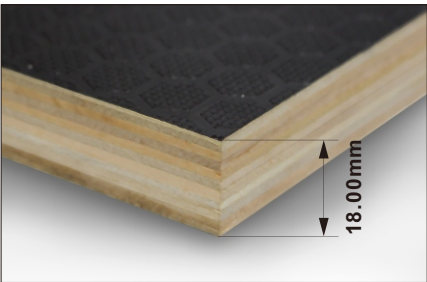
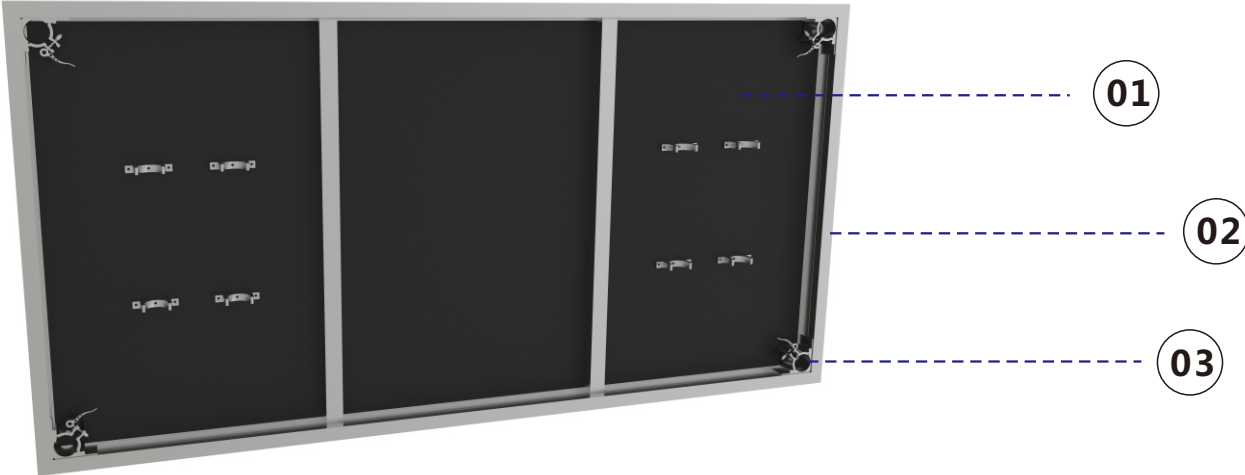
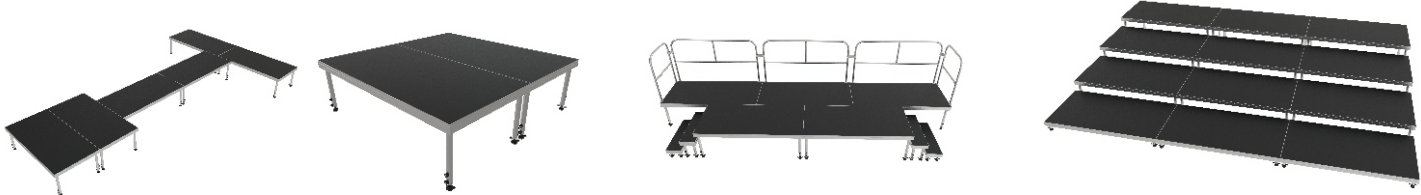
耀纳科技
SHINESTAGE TECH

EZON-FST

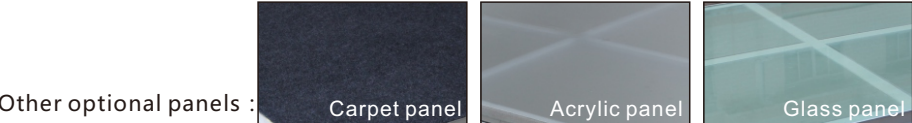


Stagehander Product manual

ISO CE SGS TUV



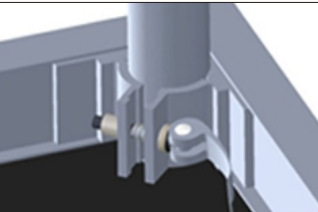
01/Panel (standard configuration)
The panel is made of 18mm thick solid wood compressed into shape, with added anti slip treatment on the surface. It is made of high-density plywood specifically designed for international stages, which has characteristics such as flame retardancy, wear resistance, and oxidation resistance.



Panel size	1000mm×1000mm	1000mm×2000mm	1220mm×1220mm
Panel packaging size	1020×1020×90mm	1020×2020×90mm	1240×1240×90mm
Aluminum alloy frame + panel weight	16.5kg	30kg	22.5kg



02/Stage framework
Made of all-aluminum alloy aviation grade aluminum 6061-T6, its mechanical properties: tensile strength R_m (MPa) ≥ 260 , yield strength $R_{p0.2}$ (MPa) ≥ 240 , to meet the needs of high-strength loading.



03/Column clamp
Column clip is an independent one-piece casting, and frame material using inline structure, column pressure piece and column leg installation more fit force, so that the overall stage more stable and solid.

Product parameters table

Bearing	1000mm×1000mm(1000kg) 1000mm×2000mm(1000kg) 1220mm×1220mm(1000kg)	Usage scenario	Indoor or outdoor
		Material quality	Aluminum alloy 6061-T6
		Panel Type	Standard 18mm thick anti slip panel Optional carpet/glass/acrylic panels
Standard	Min height: 78mm/Max height: 1200mm	Certificate authentication	ISO / SGS / CE / TUV

Stagehander comes in a wide variety of configurations. Call your shine stage representative for the best solution and budget estimate for your program. stagehander is the standard for versatility. Lighter, Stronger, easier to handle and faster to set up. The stagehander system is as elegant and stable as it is durable and repairable. Compared to anything else, StageHander is the best all-around platform and investment.

Specifications :

- 1.Simple, economical, plug-in legs make an unlimited number of configurations possible.
- 2.Legs are fabricated from round 50MM diameter aluminum extrusions and finished with a non-marring cap.
- 3.Legs are available in three types: fixed height, telescope, and adjustable height.
- 4.Standard uniform load: 6KN/M2.
- 5.Easy to handle platforms have lightweight aircraft grade aluminum frames with rounded contours that are easy to grip.



Stagehander ramps are strong, stable or yourself and easy to assemble. They have been designed to attach securely to Shinestage staging units and are available in a wide variety of heights and configurations. This cost-effective ramp solution helps ensure that all performers have an equal chance to take the stage.

FEATURES/SPECIFICATIONS

- .Ramp design meets all guidelines of the Americans with Disabilities Act (ADA) according to the 2015 International Building Code (IBC)
- .Hand rails are continuous throughout ramp
- .Clear width on ramp is a minimum of 914 mm and Landings are a minimum of 1524w x 1524d mm at any direction change
- Railings extend 762 mm at end of handrails
- Contrasting color indications designate any elevation changes
- Multiple ramp configurations available to fit your needs
- 610 mm ramp
- elevation shown with Compact storage is ideal for facilities that have limited storage space
- optional mid-rails
- . Parts are labeled for quick set-up
- .Adjustable legs are provided for easy set-up on uneven surfaces



Stage rendering

ACCESSORIES | Shinestage Accessories Page

Mid-Rails
CONFIGURATIONS

Stagehander-Compliant Ramps are customized to your specific application. Call your Shinestage representative for the best solution and budget estimate for your program



Stage legs

Standard configuration: Round legs (fixed legs)		
Model	Height	Weight
YST-1	200mm	0.368kg
	300mm	0.488kg
	400mm	0.607kg
	500mm	0.727kg
	600mm	0.847kg
	700mm	0.966kg
	800mm	1.086kg
	900mm	1.206kg
	1000mm	1.325kg
	1100mm	1.445kg
	1200mm	1.564kg

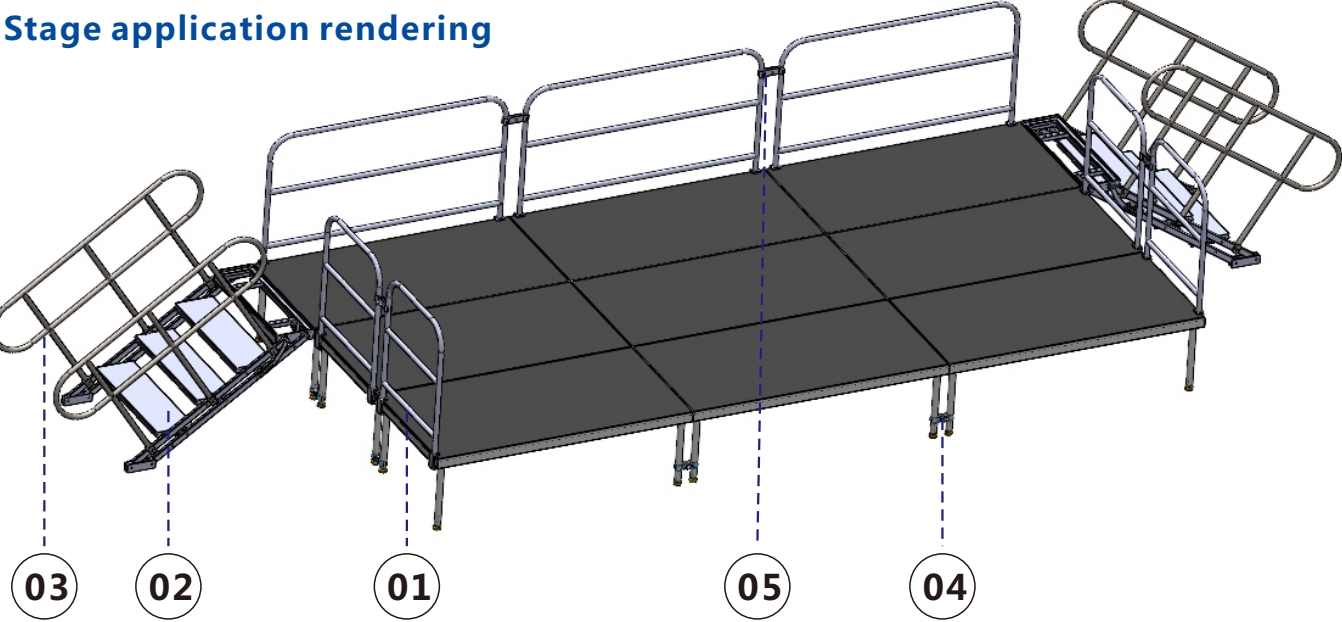
Optional: Round legs (locking pin telescopic legs)		
Model	Height	Weight
YST-4	300-400mm	0.722kg
	400-600mm	0.954kg
	500-800mm	1.163kg
	600-1000mm	1.385kg
	700-1200mm	1.606kg

Optional: Round legs (adjustable legs)		
Model	Height	Weight
YST-5	300-450mm	1.024kg
	400-600mm	1.254kg
	500-800mm	1.483kg
	600-1000mm	1.712kg
	700-1200mm	1.941kg

Optional: Round legs (with cup fixed legs)		
Model	Height	Weight
YST-3	200mm	0.477kg
	300mm	0.597kg
	400mm	0.717kg
	500mm	0.837kg
	600mm	0.957kg
	700mm	1.077kg
	800mm	1.197kg
	900mm	1.317kg
	1000mm	1.437kg
	1100mm	1.557kg
	1200mm	1.677kg

Optional: Round legs (fixed legs)			
Model	length	Height	Weight
YST-6		200mm	0.363kg
		300mm	0.483kg
		400mm	0.603kg
		500mm	0.723kg
		600mm	0.843kg
		700mm	0.963kg
		800mm	1.083kg
		900mm	1.203kg
		1000mm	1.323kg
		1100mm	1.443kg
		1200mm	1.563kg

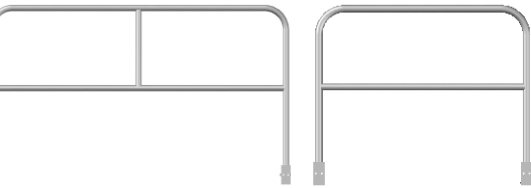
Stage application rendering



01/Stage guardrail

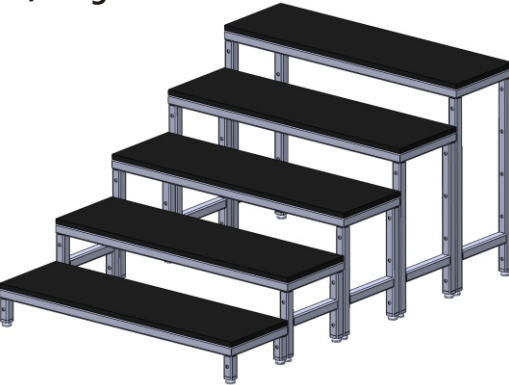


Stage guardrail (European style)			
Model	Length	Height	Weight
YSH-1	1000mm	1000mm	4.137kg
	1220mm	1000mm	4.909kg
	2000mm	1000mm	7.372kg
	2440mm	1000mm	8.664kg



Stage guardrail (Asian style)			
Model	Length	Height	Weight
YSH-1	1000mm	1000mm	3.385kg
	1220mm	1000mm	3.788kg
	2000mm	1000mm	5.217kg
	2440mm	1000mm	6.023kg

02/Stage ladder



Stage ladder (fixed height)			
Model	Specification	Step	Single weight
YSL-2	W300xH150mm	First step	4.914kg
	W300xH300mm	Second step	5.669kg
	W300xH450mm	Third step	6.070kg
	W300xH600mm	Fourth step	6.470kg
	W300xH750mm	Fifth step	6.871kg



Stairs with 3 or more levels equipped with 2 handrails

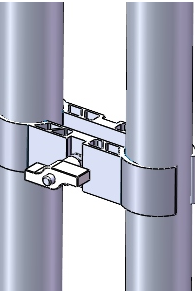
Folding stairs (height adjustment)			
Model	Specifications	Step	Weight
YSL-1	500-800mm(H)	Fourth step	26.175kg
	600-1000mm(H)	Fifth step	31.792kg
	700-1200mm(H)	Sixth step	37.409kg

03/Ladder guardrail



Ladder guardrail				
Model	Guardrail A		Guardrail B	
	Specifications	Weight	Specifications	Weight
YSH-2	1680x1170x50mm	4.064kg	1700x1080x60mm	4.064kg
	1880x1470x50mm	5.066kg	2171x1080x60mm	4.83kg
	2080x1770x50mm	6.068kg		
	2280x2070x50mm	7.071kg		
	2480x2370x50mm	8.073kg		

04/Leg clamp



Leg clamp		
Model	Material quality	Weight
YSTJ-1	Aluminum alloy	0.29kg

05/Guardrail clip



Guardrail clip		
Model	Material quality	Weight
YSHJ-1	Aluminum alloy	0.38kg



L-shaped folding cart			
Model	Material quality	Specifications	Weight
YSC-2	Iron	One set of nine	4.835kg



Guardrail cart		
Model	Specifications	Weight
YSP2C	780x1340x2202mm	41.81kg



Stage apron		
Model	Material quality	Colour
YSW-1	Fire rating	black
YSW-2	Fire rating	red

